

Basement
53'0" x 42'3"

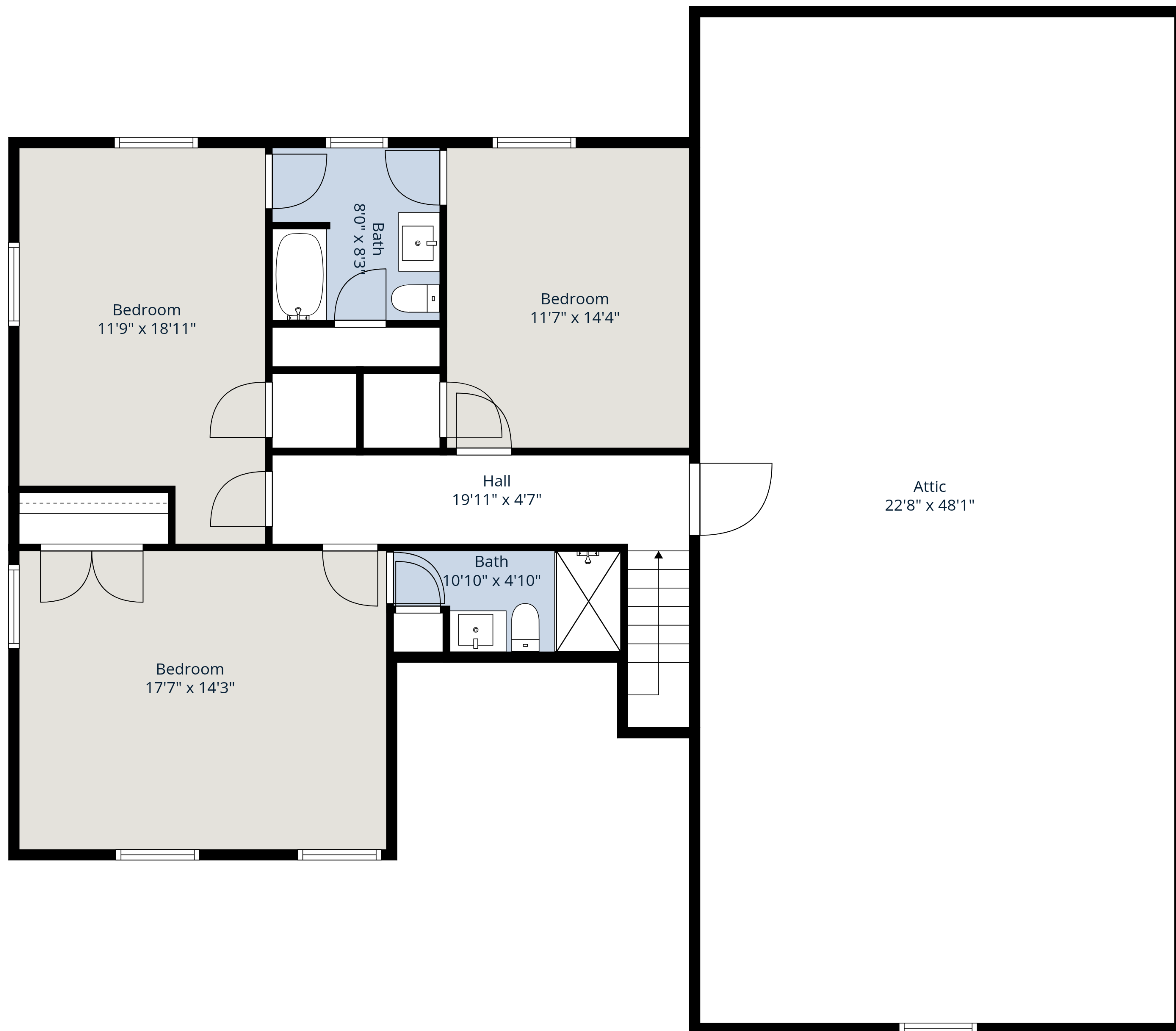
Total GLA: 2880 sq. ft | Total: 6586 sq. ft
Floor 1 - Below grade: (Excluded areas 1771 sq. ft)
1st floor: 1860 sq. ft (Excluded areas 785 sq. ft)
2nd floor: 1020 sq. ft (Excluded areas 1150 sq. ft)

Sizes And Dimensions Are Approximate, Actual May Vary.



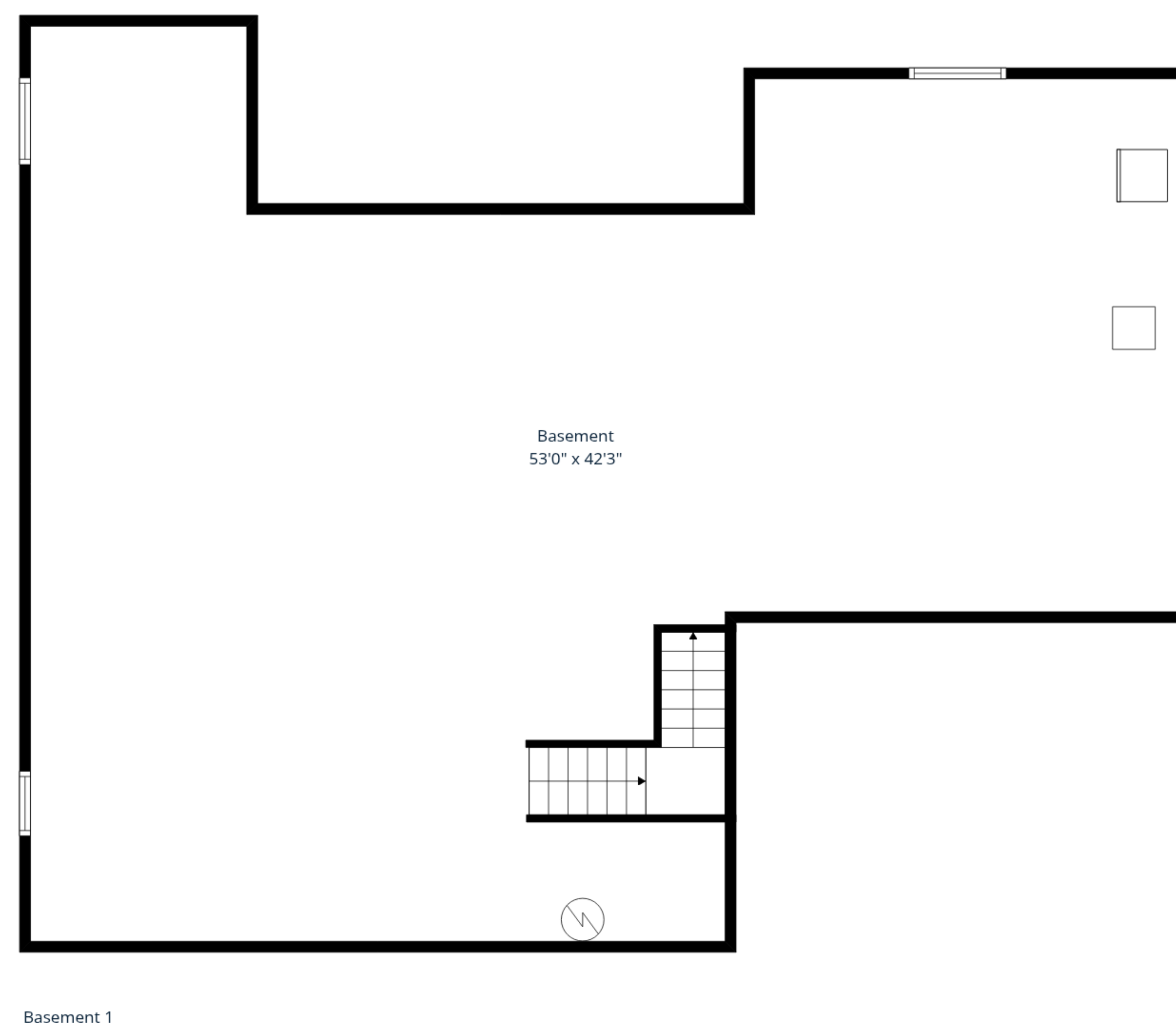
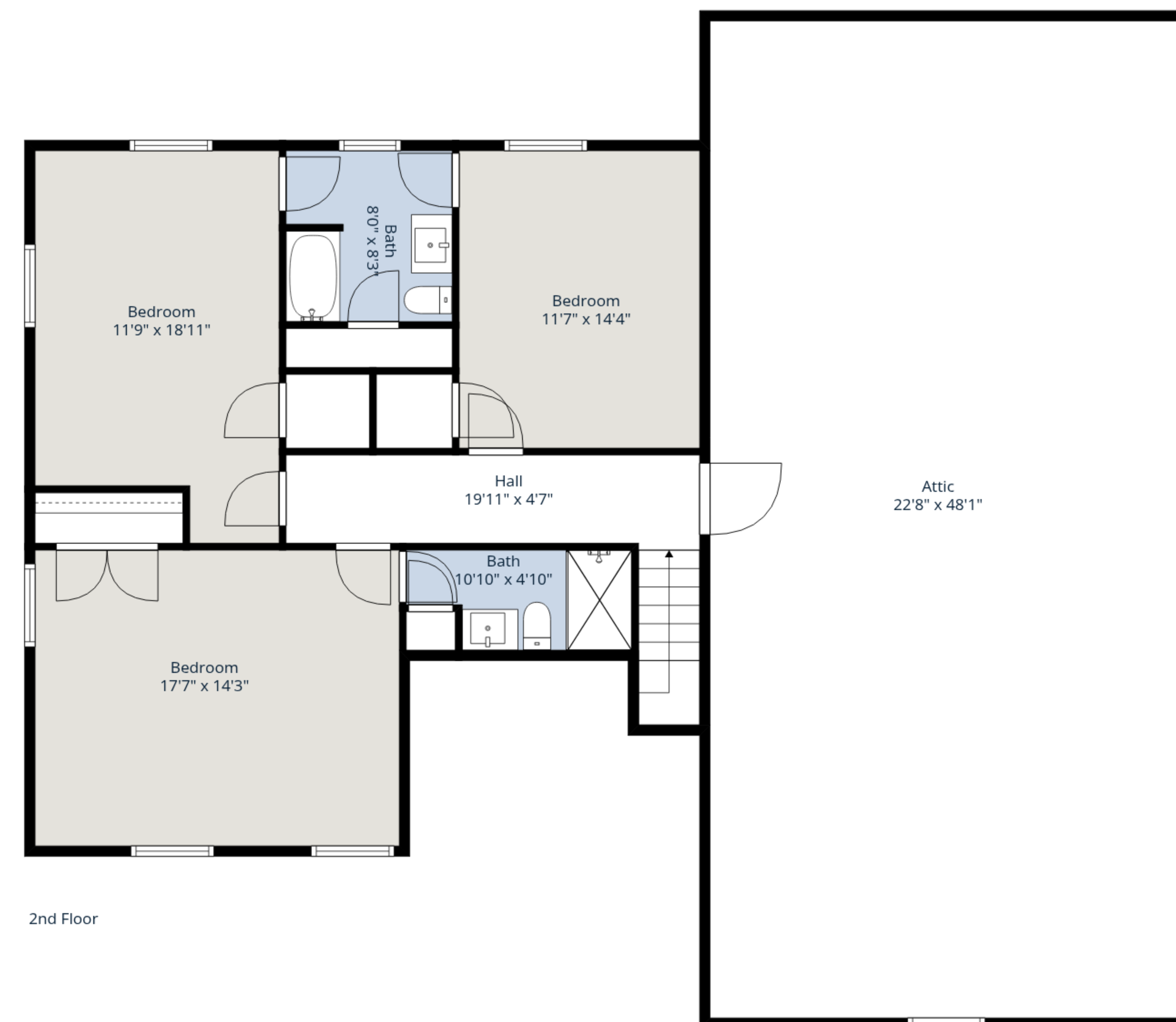
Total GLA: 2880 sq. ft | Total: 6586 sq. ft
 Floor 1 - Below grade: (Excluded areas 1771 sq. ft)
 1st floor: 1860 sq. ft (Excluded areas 785 sq. ft)
 2nd floor: 1020 sq. ft (Excluded areas 1150 sq. ft)

Sizes And Dimensions Are Approximate, Actual May Vary.



Total GLA: 2880 sq. ft | Total: 6586 sq. ft
 Floor 1 - Below grade: (Excluded areas 1771 sq. ft)
 1st floor: 1860 sq. ft (Excluded areas 785 sq. ft)
 2nd floor: 1020 sq. ft (Excluded areas 1150 sq. ft)

Sizes And Dimensions Are Approximate, Actual May Vary.



Total GLA: 2880 sq. ft | Total: 6586 sq. ft
 Floor 1 - Below grade: (Excluded areas 1771 sq. ft)
 1st floor: 1860 sq. ft (Excluded areas 785 sq. ft)
 2nd floor: 1020 sq. ft (Excluded areas 1150 sq. ft)

Sizes And Dimensions Are Approximate, Actual May Vary.

